



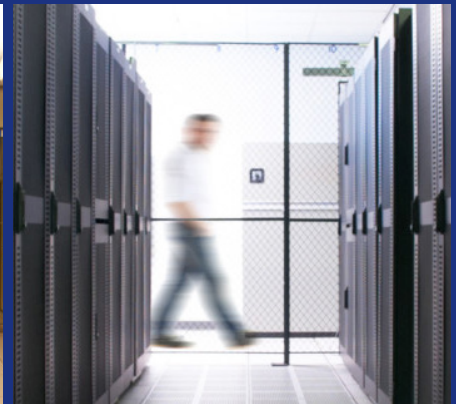
The New York Chelsea Data Center

Delivering Premier Connectivity in New York

The New York Chelsea Data Center

The New York Chelsea Data Center is strategically located in Manhattan, at 85 10th Avenue, and offers 60,000 square feet of Tier 3 colocation space. Connected to the Telehouse owned New York International Exchange, the Data Center provides direct access to over 25 major carriers and 150 connectivity members. The colocation facility is ideal for financial, ad tech, content delivery, and managed service providers, as well as any other organizations looking to take advantage of the accessibility and carrier density Manhattan has to offer.

- Flexible colocation options from half a cabinet up to full racks and private cages
- Fully managed speedy 24/7 remote hands support
- Migration and hardware supply and maintenance
- Domestic and global connectivity with access to CDNetworks Media Acceleration



www.telehouse.com

Power

- Standard power to rack at 3.5kVA with scalable options to 5kVA
- Single power feed of 4.15MVA in a N+2 configuration is provided into the building
- Four static 750kVA (3,000 total kVA); 3+1 configuration
- Two 2.5MVA diesel-powered generators fueled to provide 80 hrs at full load
- Battery capacity at 15 minutes at full load
- Two to four independent power circuits per cabinet from the resilient banks of UPS on a (N+1) configuration

Air Conditioning and Cooling

- Redundant N+1 cooling as 2 chiller systems with 4 risers
- Maximum external ambient temperatures of 75°F and 50% humidity
- Hot aisle/cold aisle zone design
- Four cooling towers
- Over 18 inch raised floor throughout
- 24/7 central monitoring for all HVAC and building systems

Connectivity

- Multiple bandwidth & IP connectivity options
- Low monthly cross connect fees and choice of managed IT services inside or outside our facilities
- Diverse external and internal fiber routes (POE and building risers), all supported with DSR-MDF-IDF high performance cabling
- Peering with Telehouse America's International Internet Exchanges allows you to interconnect to multiple transit providers versus connecting individually
- Both NYIIX and LAIIX are based on Brocade carrier class and high speed platform. Public and/or private peering via VLAN services are available. Route servers are available at both locations.

Fire Detection and Suppression

- Gas suppression system ensures no damage to customer equipment
- Smoke alarms with pre-action sprinklers
- State-of-the-art leak sensors in place
- Rooftop antenna access
- 24/7 onsite Facility Engineering, Technical Support & Customer Assistance Center

Security Systems

- CCTV surveillance installed throughout internal and external perimeters
- Secured & monitored single-person point entry and physical 24/7 security personnel on-site
- 24/7 authorized customer personnel access via regularly updated access lists with photo identification
- Biometric security confirmation system throughout the facility
- Separate access card required for the use of elevators to access customer colocation floor
- Strict security processes are in place to ensure delivery and loading of goods are secure

Additional Specifications

- Over 18 inch raised floor throughout
- 8.85 ft. above raised floor
- Maximum floor load of 143.4 lb/sq. ft.
- Overhead power and communications cable route
- Current PUE level at 1.69
- Customer staging rooms available with storage space
- Access to rooftop antenna available